A photograph of a sea turtle resting on a sandy beach. The turtle's head is in the center, and it is holding a piece of light blue plastic material, likely a bag or a piece of trash, in its mouth. The background is a soft-focus view of the beach and the ocean.

Une mer de déchets :
Protocoles de quantification des déchets marins
Pression sur tortues marines et poissons
Circonstances d'ingestion par tortues marines

Delphine Gambaiani

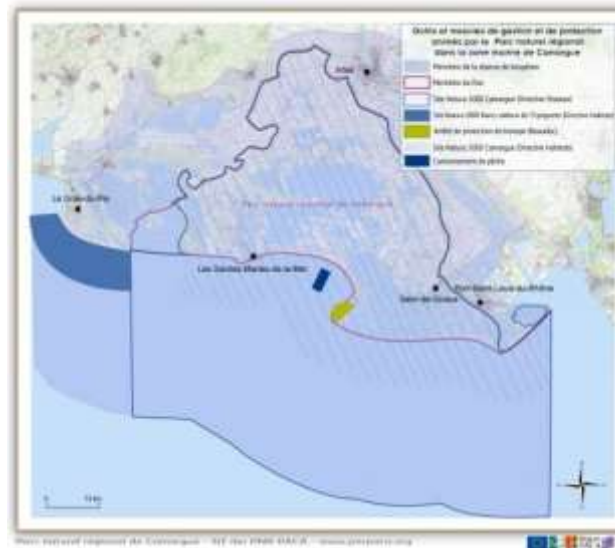
MedSeaLitter

- Standardiser des protocoles pour quantifier les déchets marins en Méditerranée et évaluer leur pression sur la biodiversité, à l'échelle du bassin et des AMPs
- 3 ans
- 4 pays (11 partenaires)

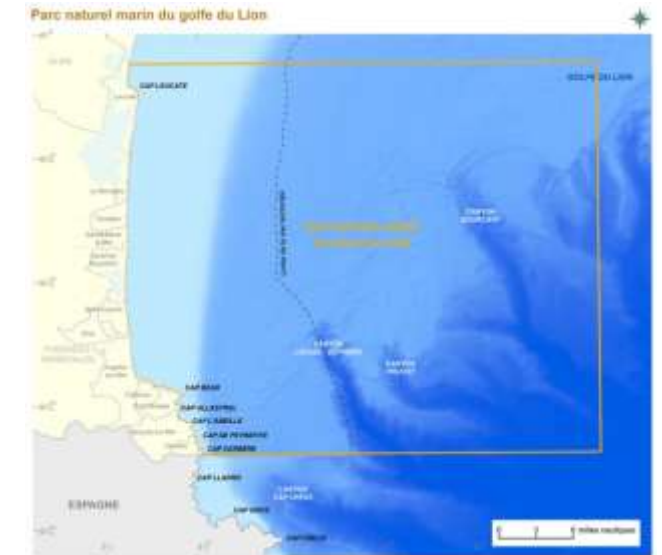


Tester et comparer
des protocoles
(efficacité/ergonomie/coûts)

Zones d'étude



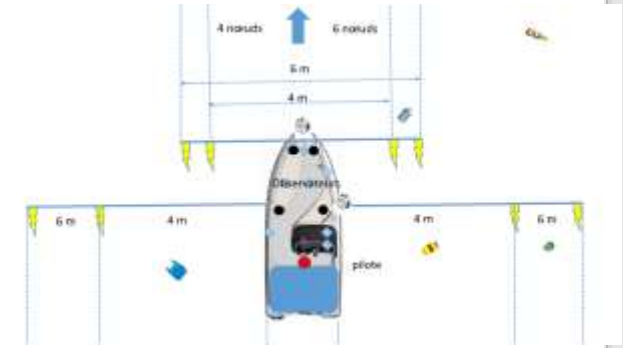
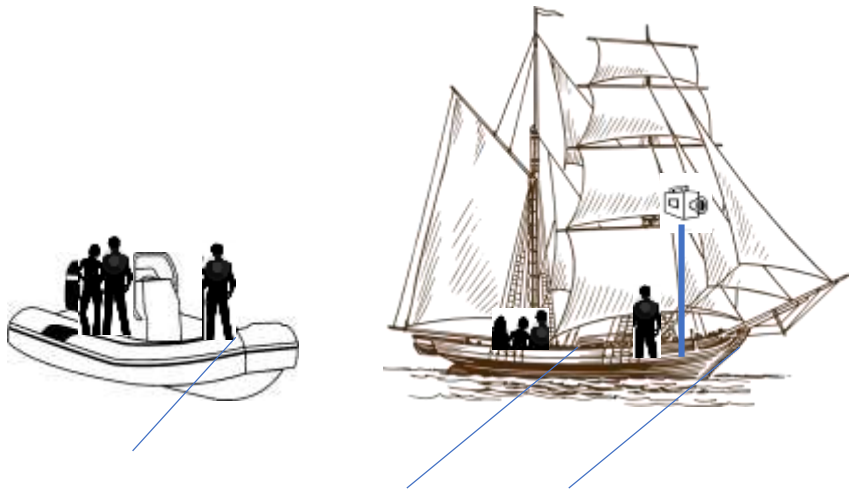
Zone Natura 2000 Camargue



Parc Naturel Marin
du Golfe du Lion

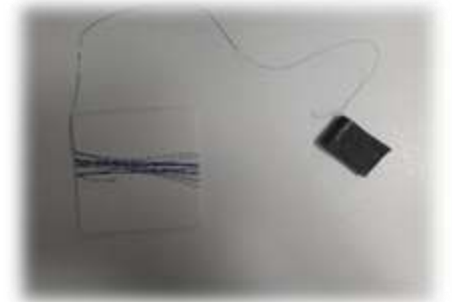
Tester des protocoles (efficacité/ergonomie/coûts)

- 4 nds vs 6 nds
- 4 m vs 6 m
- Observateur vs caméra



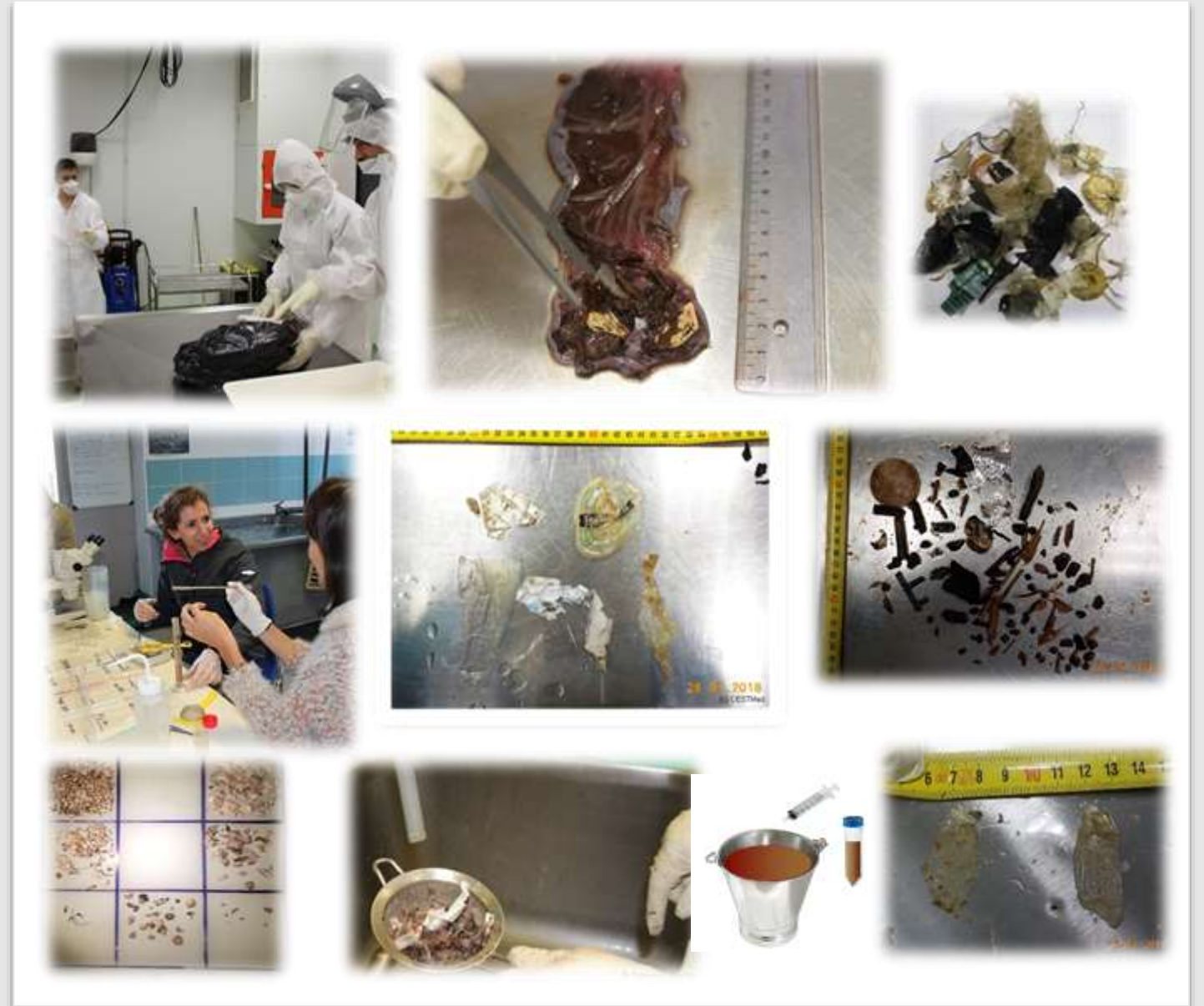
Probabilité de détection des déchets flottants

- Bateau (50 cm de hauteur)
- 4 nœuds
- Réplicas de transects de bandes
- Carrés de plastique blanc (1; 2,5; 5; 10; 20; 50 cm)
- Observateur
- Camera
- Drone



Pression des macro-déchets

- Ingestion par les tortues marines (autopsies-DCSMM)
- Régime alimentaire (observations visuelles et ADNe)



Sélectivité alimentaire (accidentel ou volontaire?)

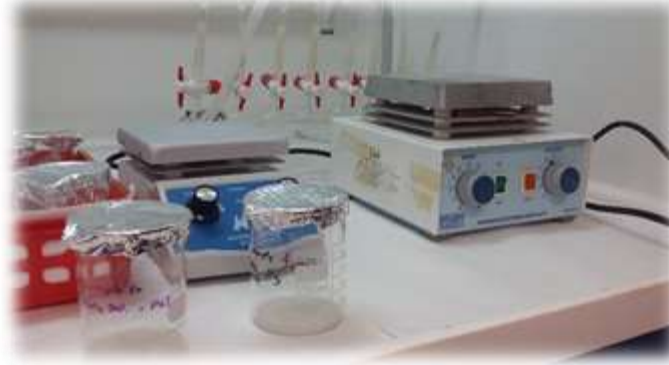
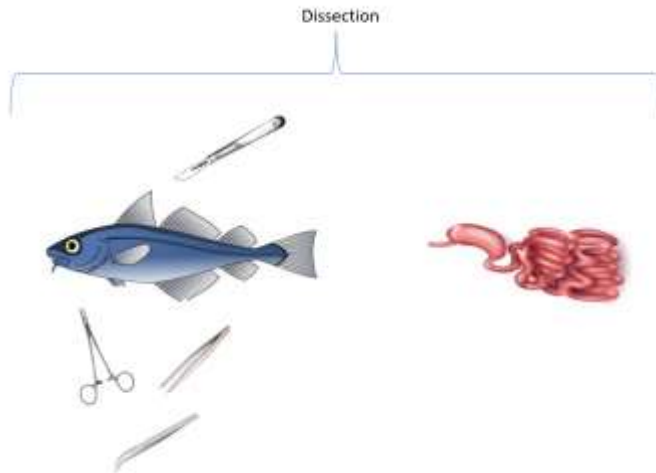
- Test de protocoles *in* et *ex situ* (proies naturelles vs plastiques de formes, couleurs, odeurs variables)



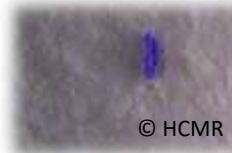
| | A | B | C | E | T | T | H | H | I | I | E | L | M | N | C | F | |
|----|---------------------|---------|------------|--------------|----|----|----|--------------|-----------------|-----------------|----------------|----------------|----------|------------|--------------|---|--|
| 1 | Date | N° zone | Coord. GPS | Météorologie | | | | Dir. du vent | Dir. du courant | Régime de marée | Temp. de l'eau | Temp. de l'air | Humidité | Visibilité | Observations | | |
| 2 | | | | ES | ES | EP | PS | | | | | | | | | | |
| 3 | | | | | | | | | | | | | | | | | |
| 4 | N° de l'observateur | | | | | | | | | | | | | | | | |
| 5 | | | | | | | | | | | | | | | | | |
| 6 | | | | | | | | | | | | | | | | | |
| 7 | | | | | | | | | | | | | | | | | |
| 8 | | | | | | | | | | | | | | | | | |
| 9 | | | | | | | | | | | | | | | | | |
| 10 | | | | | | | | | | | | | | | | | |
| 11 | | | | | | | | | | | | | | | | | |
| 12 | | | | | | | | | | | | | | | | | |
| 13 | | | | | | | | | | | | | | | | | |
| 14 | | | | | | | | | | | | | | | | | |
| 15 | | | | | | | | | | | | | | | | | |
| 16 | | | | | | | | | | | | | | | | | |
| 17 | | | | | | | | | | | | | | | | | |
| 18 | | | | | | | | | | | | | | | | | |
| 19 | | | | | | | | | | | | | | | | | |
| 20 | | | | | | | | | | | | | | | | | |
| 21 | | | | | | | | | | | | | | | | | |
| 22 | | | | | | | | | | | | | | | | | |
| 23 | | | | | | | | | | | | | | | | | |
| 24 | | | | | | | | | | | | | | | | | |
| 25 | | | | | | | | | | | | | | | | | |
| 26 | | | | | | | | | | | | | | | | | |
| 27 | | | | | | | | | | | | | | | | | |
| 28 | | | | | | | | | | | | | | | | | |
| 29 | | | | | | | | | | | | | | | | | |
| 30 | | | | | | | | | | | | | | | | | |
| 31 | | | | | | | | | | | | | | | | | |
| 32 | | | | | | | | | | | | | | | | | |
| 33 | | | | | | | | | | | | | | | | | |
| 34 | | | | | | | | | | | | | | | | | |
| 35 | | | | | | | | | | | | | | | | | |
| 36 | | | | | | | | | | | | | | | | | |
| 37 | | | | | | | | | | | | | | | | | |
| 38 | | | | | | | | | | | | | | | | | |
| 39 | | | | | | | | | | | | | | | | | |
| 40 | | | | | | | | | | | | | | | | | |
| 41 | | | | | | | | | | | | | | | | | |
| 42 | | | | | | | | | | | | | | | | | |
| 43 | | | | | | | | | | | | | | | | | |
| 44 | | | | | | | | | | | | | | | | | |
| 45 | | | | | | | | | | | | | | | | | |
| 46 | | | | | | | | | | | | | | | | | |
| 47 | | | | | | | | | | | | | | | | | |
| 48 | | | | | | | | | | | | | | | | | |
| 49 | | | | | | | | | | | | | | | | | |
| 50 | | | | | | | | | | | | | | | | | |



Pression des micro-plastiques



© HCMR



© HCMR



© HCMR



Recherche Action Participative (GDR PARCS)

- Coconstruire un programme de recherche sur la thématique des déchets et des tortues marines avec les pêcheurs



CESTMed

RTMMF



A photograph of a surfer riding a barrel wave. The water is a vibrant turquoise color. The surfer is shirtless and wearing blue and white patterned shorts. The wave is curling over him, creating a tunnel effect. In the background, the ocean is filled with various pieces of plastic trash, including bottles, caps, and other debris, illustrating the impact of ocean pollution.

Merci pour votre attention

delphine.gambaiani@cestmed.org