

Vol. 111: 191–205, 2014 doi: 10.3354/dao02790	DISEASES OF AQUATIC ORGANISMS Dis Aquat Org	Published October 16
--	--	----------------------

Decompression sickness (“the bends”) in sea turtles

D. García-Párraga^{1,*}, J. L. Crespo-Picazo^{1,2}, Y. Bernaldo de Quirós³, V. Cervera⁴,
L. Martí-Bonmati⁵, J. Díaz-Delgado³, M. Arbelo³, M. J. Moore⁶, P. D. Jepson⁷,
Antonio Fernández³

¹Oceanographic, Veterinary Services, Parques Reunidos Valencia, Ciudad de las Artes y las Ciencias,
C/ Eduardo Primo Yüera 1B, 46013 Valencia, Spain

²VISAVET Center and Animal Health Department, Veterinary School, Complutense University of Madrid,
Av Puerta del Hierro s/n, 28040 Madrid, Spain

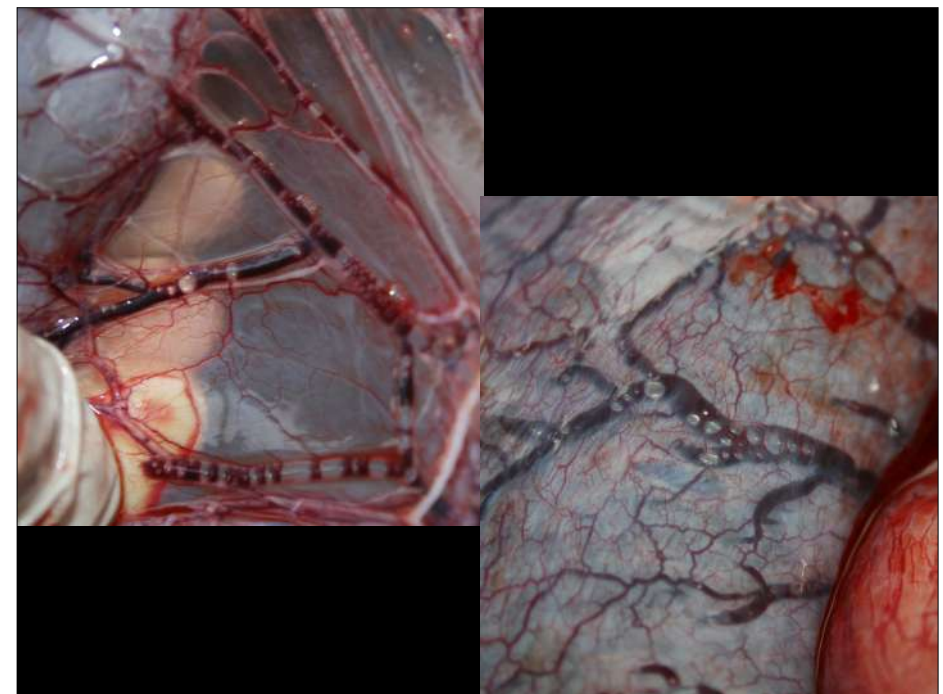
³University of Las Palmas de Gran Canaria, Institute of Animal Health, C/Transmolana s/n, Arucas, 35416, Las Palmas, Spain

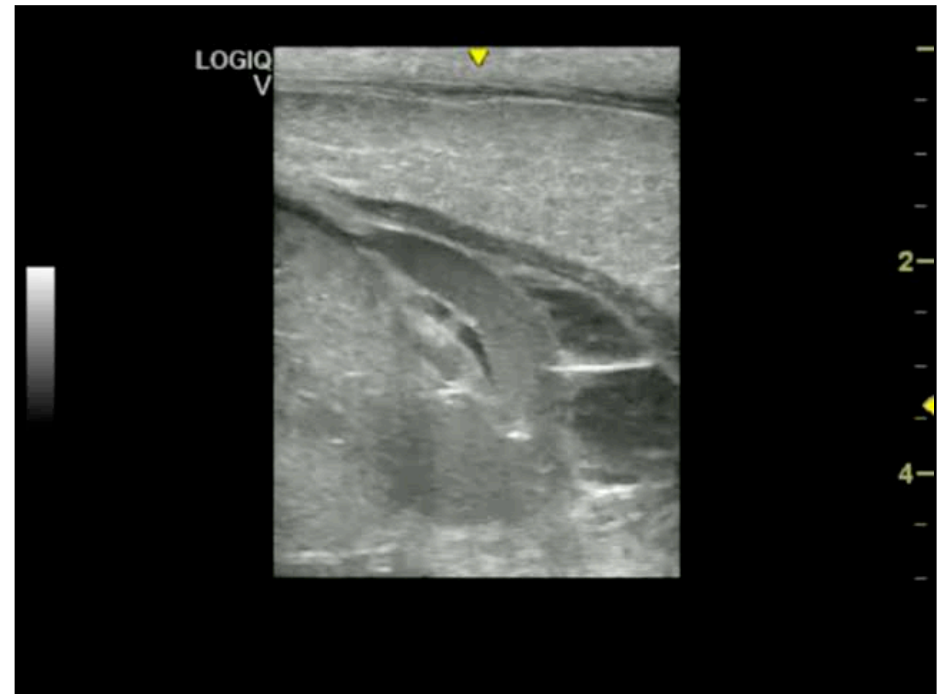
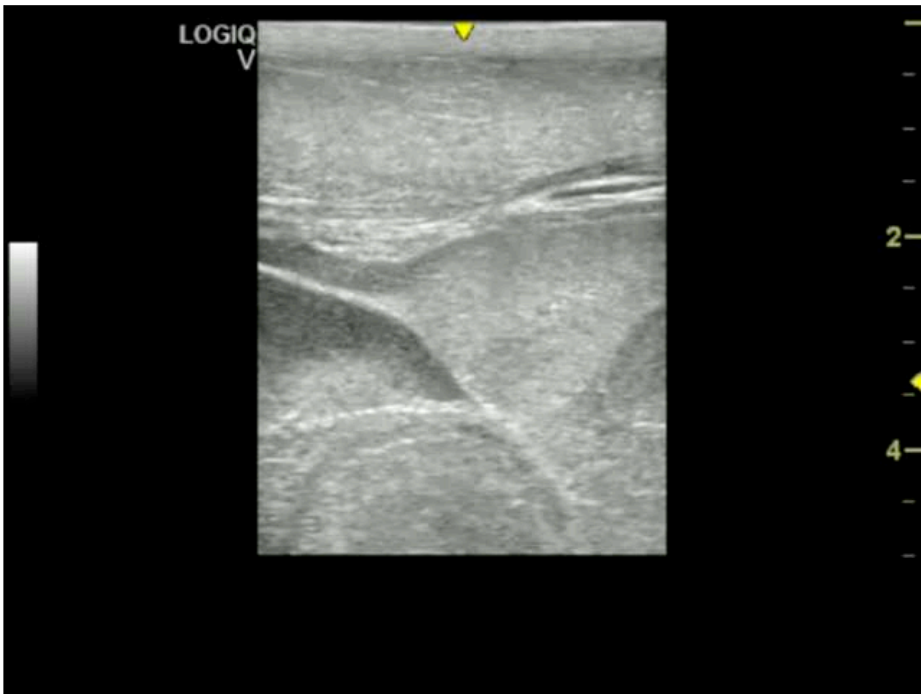
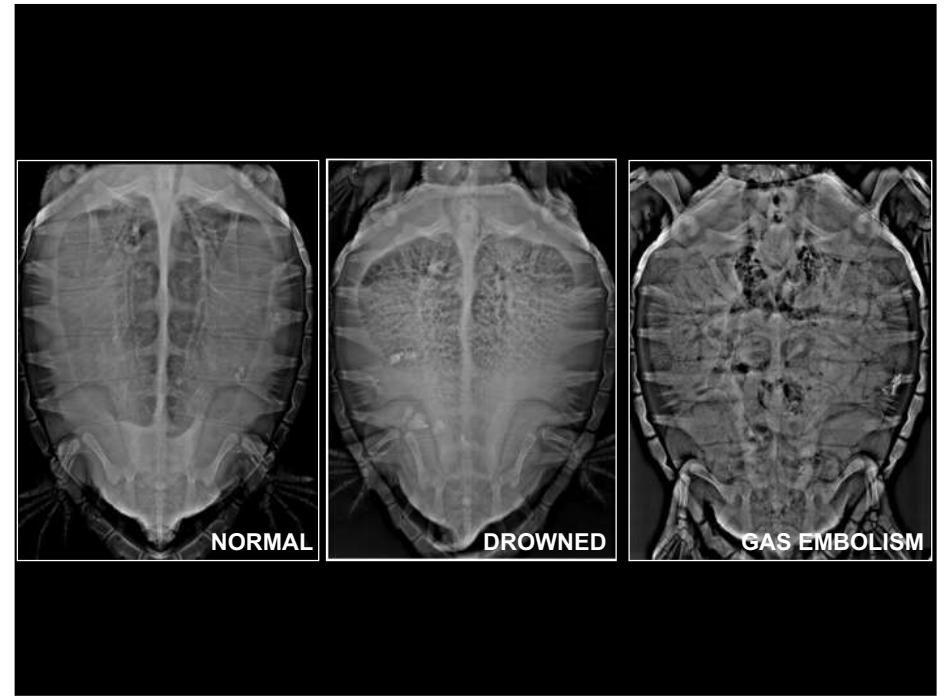
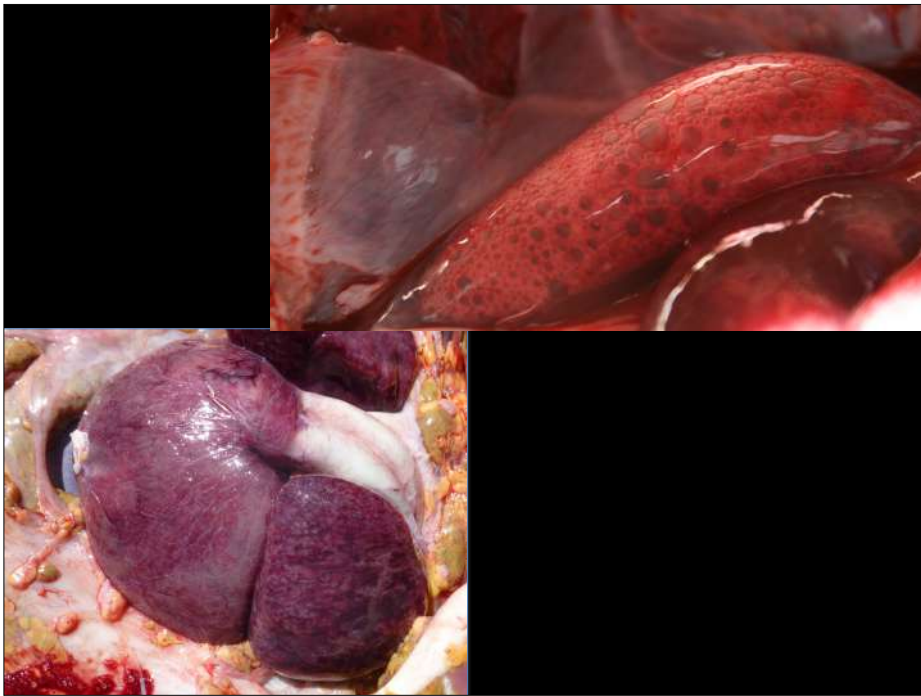
⁴Hospital Veterinario Valencia Sur, Avda. Picassent, 20, 46469 Silla, Valencia, Spain

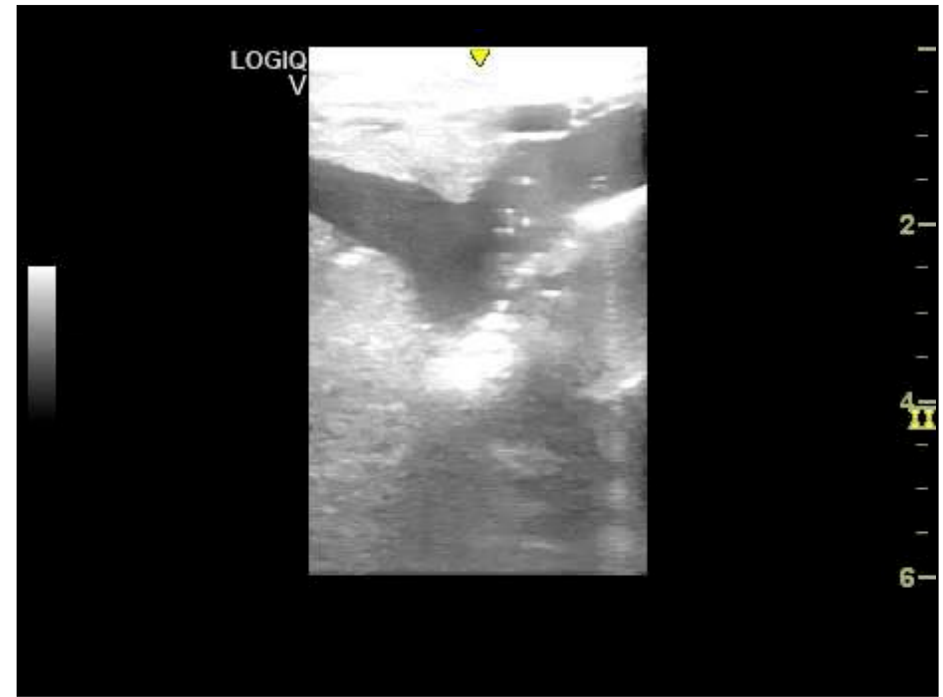
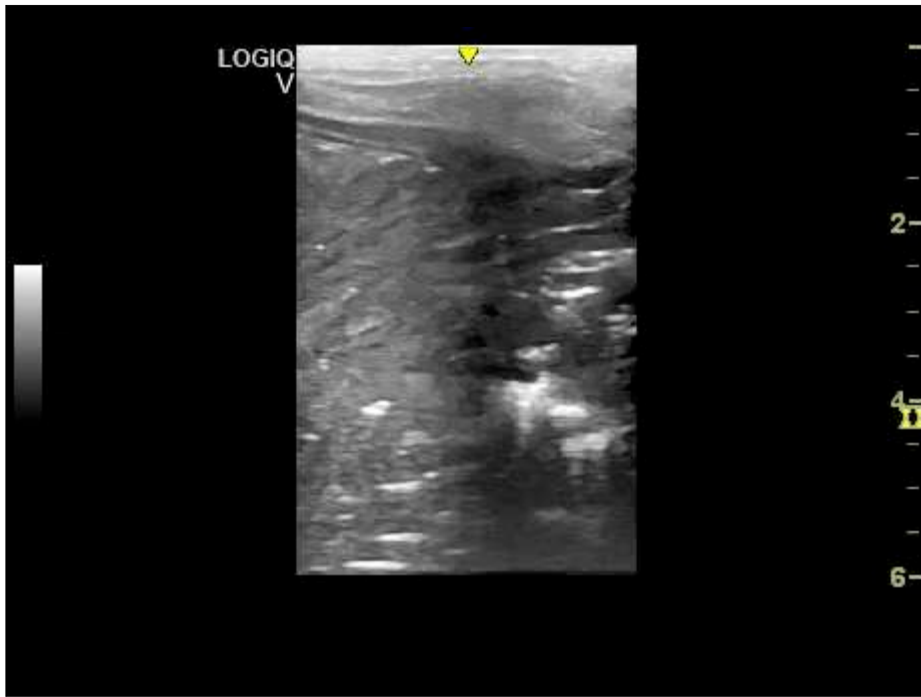
⁵Grupo de Investigación Biomédica en Imagen GIBI230, Radiology Department, Hospital Universitario y Politécnico La Fe,
Av. Rulerar Sur s/n, 46026 Valencia, Spain

⁶Woods Hole Oceanographic Institution, Department of Biology, 266 Woods Hole Road, Woods Hole, MA 02543, USA

⁷Institute of Zoology, Zoological Society of London, Regent’s Park, London, NW1 4RY, UK

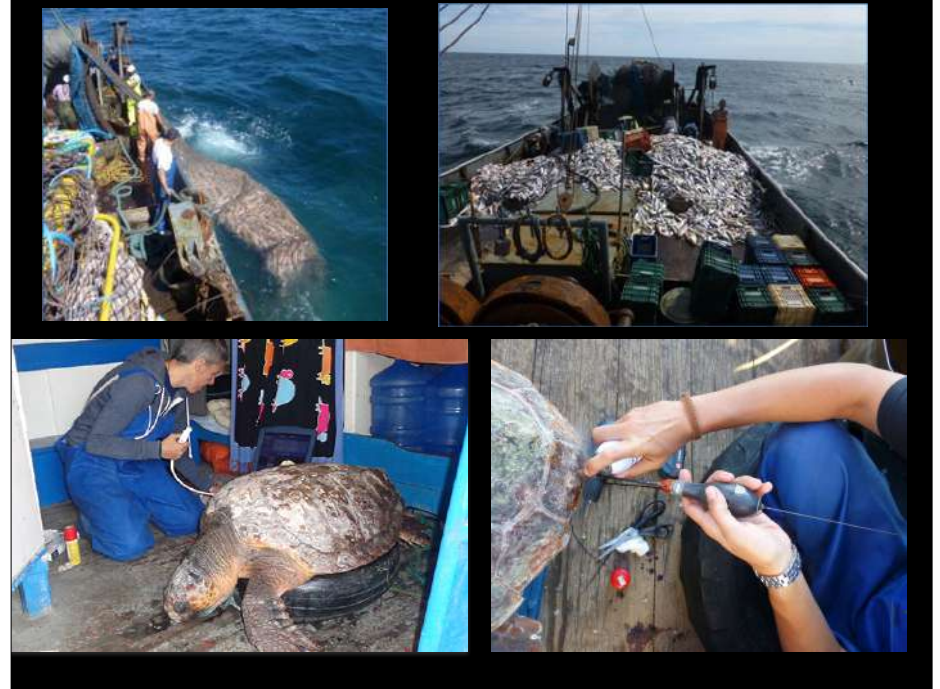






What happens on board trawl vessels?

- How many animals develop GE on board?
- How quickly does it happen?
- How quickly does it worsen?
- What are the risk factors? Depth, duration of trawl, speed of net retrieval, species, size of animals, water temperature
- What happens to released animals?
- What is the mortality related to GE, which so far has not been accounted for?



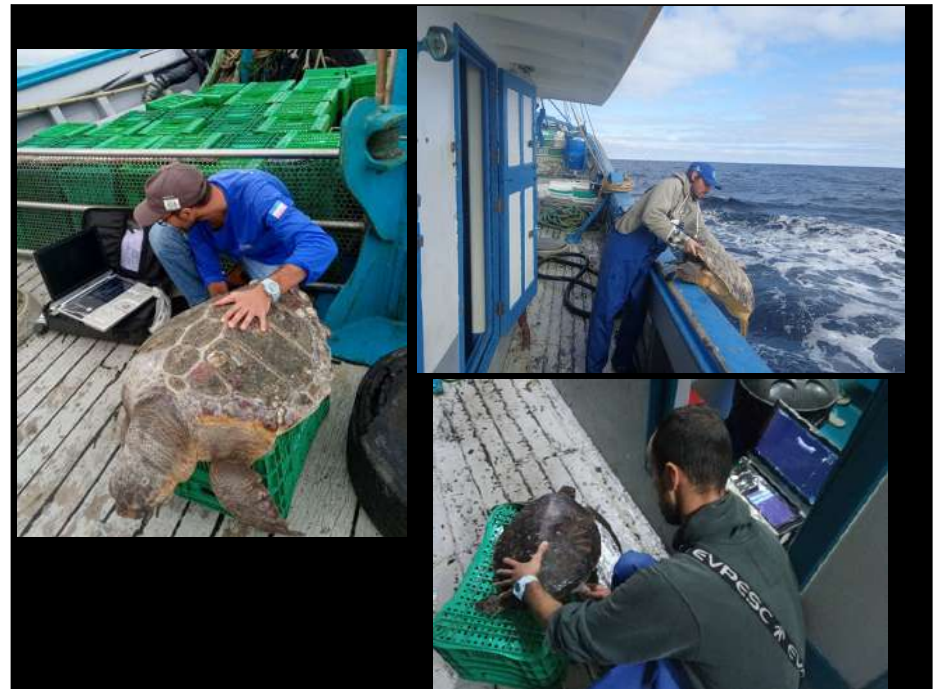
www.nature.com/scientificreports

**SCIENTIFIC
REPORTS**
nature research

OPEN On-board study of gas embolism
in marine turtles caught in bottom
trawl fisheries in the Atlantic Ocean

M. L. Parga¹, J. L. Crego-Pizarro², D. Monteko¹, D. Gardis-Pérez¹, J. A. Hernández²,
Y. Swimmer³, S. Paz¹ & N. I. Stacy⁴

- Trawling of around 4 hours, at between 18 and 80 meters depth, summer and winter
- Total of 28 turtles evaluated
- Mostly loggerheads (one olive Ridley), of around 60-80cm CCL
- Ultrasound or necropsy in 20 turtles: all of them with GE
- GE obvious in as little as 15 minutes after surfacing, worsening over the next 2 hours
- 12 of 28 animals (43%) died on board
- 3 of 15 released animals (20%) died during the first 6 days post-release



2nd (ongoing) study - results so far

- Trawling slightly longer (3-7 hours), at 15-81 meters, mostly summer (1 winter trip)
- Another 20 turtles evaluated
- Mostly loggerheads (another olive Ridley and one green), of around 60-80cm CCL
- Ultrasound or necropsy in 19 turtles: all of them with GE
- 8 of 20 animals (40%) died on board
- 4 of 11 released animals (36%) died during the first 1-2 days post-release

